

Packaging Department Standard Operating Procedure

Title	Non-Food Package Test Procedures: Package Test SOP, Supplement for Images	
Sponsor	Non-Food Packaging Department	
Created / Revised Date	12/2018; 03/2019	
Participating Functions	GSO, Colony Brands, Non-Food Suppliers	
Document #	PK.PTI_2.3_18Q4	Reference Documents: All with PK.PT IDs

Purpose Provide consistent imaging of products and packaging after testing to ensure package test reports deliver clearly understood images for evaluation and documentation.

Scope: For use by Non-Food Packaging Department Staff, GSO, Test Labs and Suppliers

Inputs/Tools:

- Suppliers package test report template
- Camera
- E-mail

Outputs/Deliverables (info/decisions/outcomes produced):

- Clear and structured reporting
- Reduce the need for repeat review and/or editing
- Improve documentation integrity

Terminology:

- **Carton / Package** – The packaging material that protects an individual item, i.e. 1.5 mil polybag, corrugate box, etc.
- **Item** – Any unique manufactured or purchased part. This is the product we purchase from your company that is eventually shipped to the customer as the package label number (PLN).
- **Selling Unit / Single Selling Unit** – The product packaged and shipped as described in the catalog or website. One (1 each, 1 set, 1 item) selling unit as packaged.
- **Small Parcel Distribution** – Distribution environment managed by small parcel carriers, such as UPS, USPS, FedEx, etc.
- **Supplier / Vendor / Seller**—These terms are used interchangeably and have the same meaning.

Steps:

Image Documentation: NOTE that ALL images must be of the actual product tested. Stock photos are not valid.

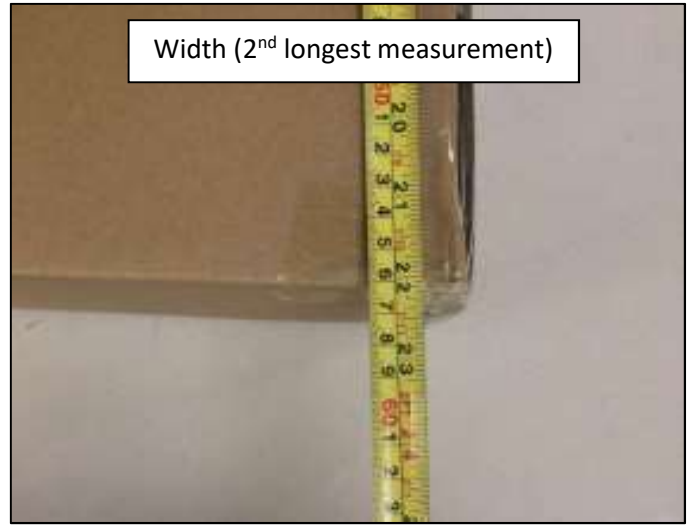
- 1) Conduct packaging test required for product type, dimensions and weight.
- 2) Start ALL Test Report images with dimensions and weight and close-up of fluting.
- 3) Take images in sequence of the layers of the packaging and provide clear, close-up images of the individual components.

A. Canisters	F. Lighting
B. Dinnerware Sets	G. Outdoor – Furniture
C. Furniture – Knock Down	H. Outdoor – Décor
D. Furniture – Set Up	I. Wall Decor
E. Home Accessories	

- 4) Finish: Include close-up images of any glass or mirrors (such as doors, glass table tops, sconces, etc.), any electronic or assembly parts, any damaged sections of the item and any damaged packaging.

Step 1 Carton Structure & Weight Documentation Examples

Start ALL Test Report images with dimensions and weight and close-up of carton fluting.



Step 2 Product & Package Documentation Examples

A. Canisters



B. Dinnerware Set



Example Dinnerware Set continued



C. Knock-Down Furniture



Example Knock-Down Furniture continued



Example Knock-Down Furniture continued



Example Knock-Down Furniture continued



D. Set-Up Furniture



Example Set-Up Furniture continued



E. Home Accessories



Example Home Accessories continued



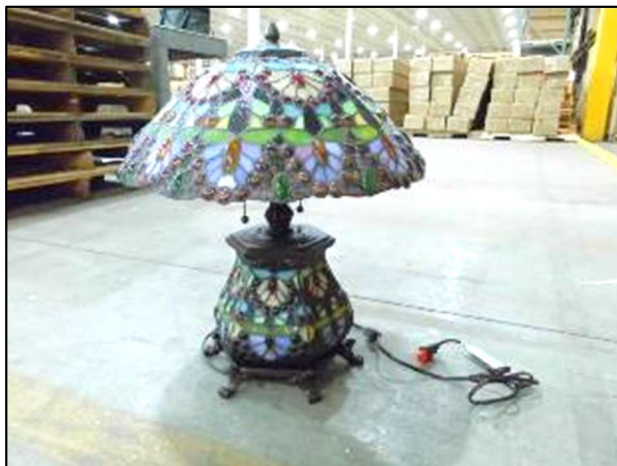
F. Lighting



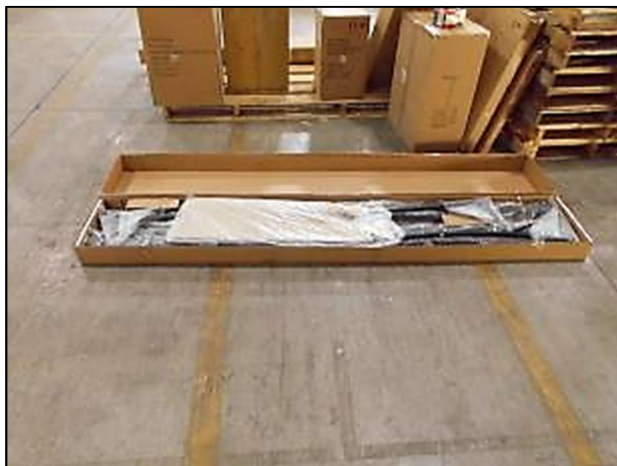
Example Lighting continued



Example Lighting continued



G. Outdoor – Furniture



Example Outdoor - Furniture continued



H. Outdoor – Décor



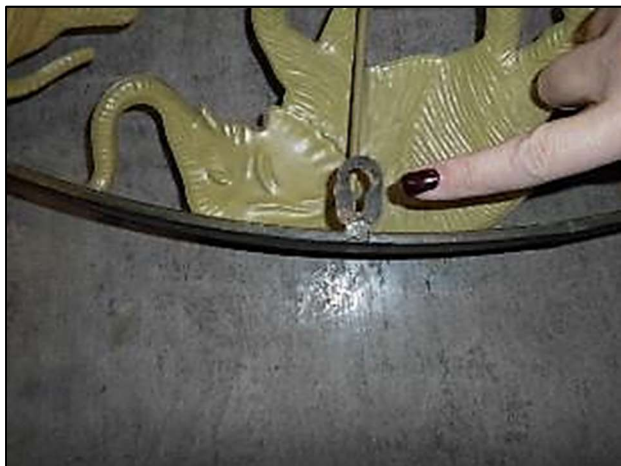
Example Outdoor - Decor continued



I. Wall Décor



Example Wall Decor continued



Step 3 Product & Package Detail Examples

When finishing your report include close-up images of any glass or mirrors (such as doors, glass table tops, sconces, etc.), any electronic or assembly parts, clips or hangers, damaged sections of the item and damaged packaging.



