



Understanding Plus Fit

MM / MV Body Shapes -Real Women

MM / MV 顾客群体的体型照片

Chicago Actives (1)



MM / MV Body Shapes -Real Women

MM / MV 顾客群体的体型照片

Chicago Actives (2)



MM / MV Body Shapes -Real Women

MM / MV 顾客群体的体型照片

Chicago Actives (3)

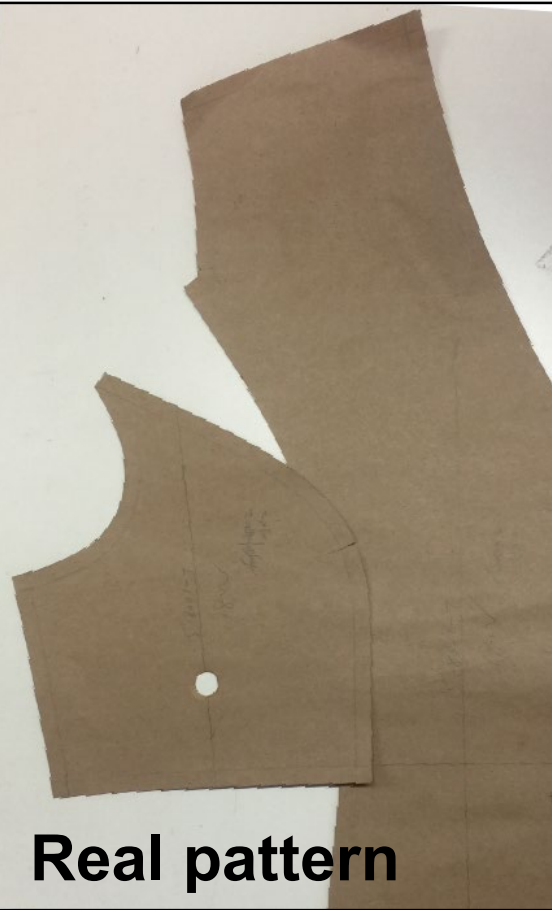


Plus fit 指导方针

- **1.The most important rule when producing Plus clothing is to NOT just grade up from Missy. If this is done, the bigger the size, the more boxy and less fitted the garment becomes.**
- **特别提醒我们Missy和Plus样板必须要分开单独纸板，不能使用Missy推挡方法，如果这样做，尺码越大，衣服越四四方方不合身。**
- **2.When constructing Plus garments, it is important to distribute shaping throughout the garment, not just at the side seams. This can be done by:**
- **构造plus码纸样时，从整体服装上进行造型是非常重要的，不仅仅是在侧缝我们可以通过以下方式对衣服进行塑型：**
- **Adding seams in addition to the side seams**
- **添加必要的分割缝**
- **•Adding princess seams**
- **添加公主线**
- **•Adding bust darts /Bust Projection**
- **加胸省使样品有足够的胸量**
- **3.There are many aspects of fitting that seem to become much more problematic when reaching Plus sizes. The following fit issues are shown in the succeeding slides:**
- **从版型方面来讲plus衣服问题要多与Missy，具体请看如下幻灯片所示：**

Good VS Poor Bust Projection

GOOD



Real pattern

Example of good projection and bust placement.

胸部公主线圆顺饱满，没有多余的量

POOR



Excess fullness at the side of the bust and above the bust.

在胸部侧面和胸部以上的过度丰满,引起胸部起皱

Princess seam not sitting correct

公主线位置不正确



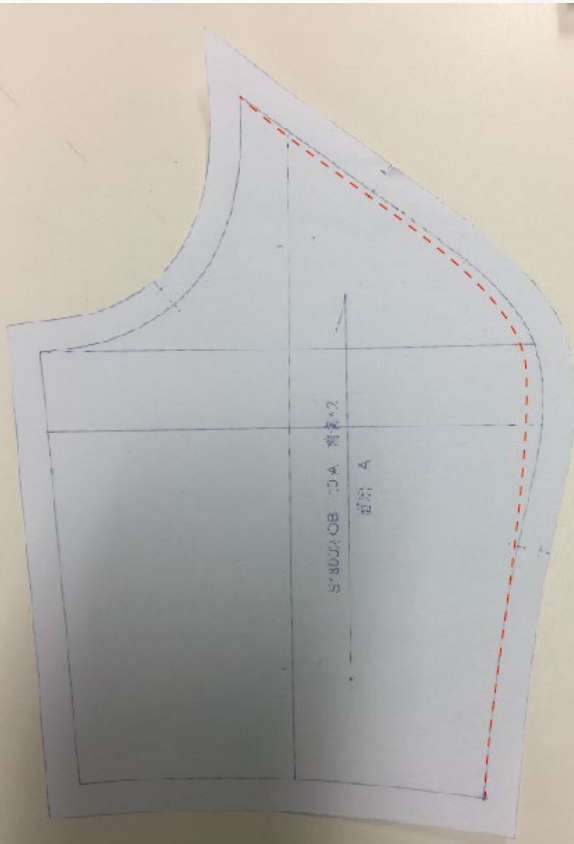
公主线位置不正确引起样品前门襟起翘、袖笼起空和胸部紧绷感

The wrong princess placement causing some problem such as:

Hiking up at end of CF / Tightly at bust / Scoop out at front armhole

Excess fullness Bust projection

胸量过大

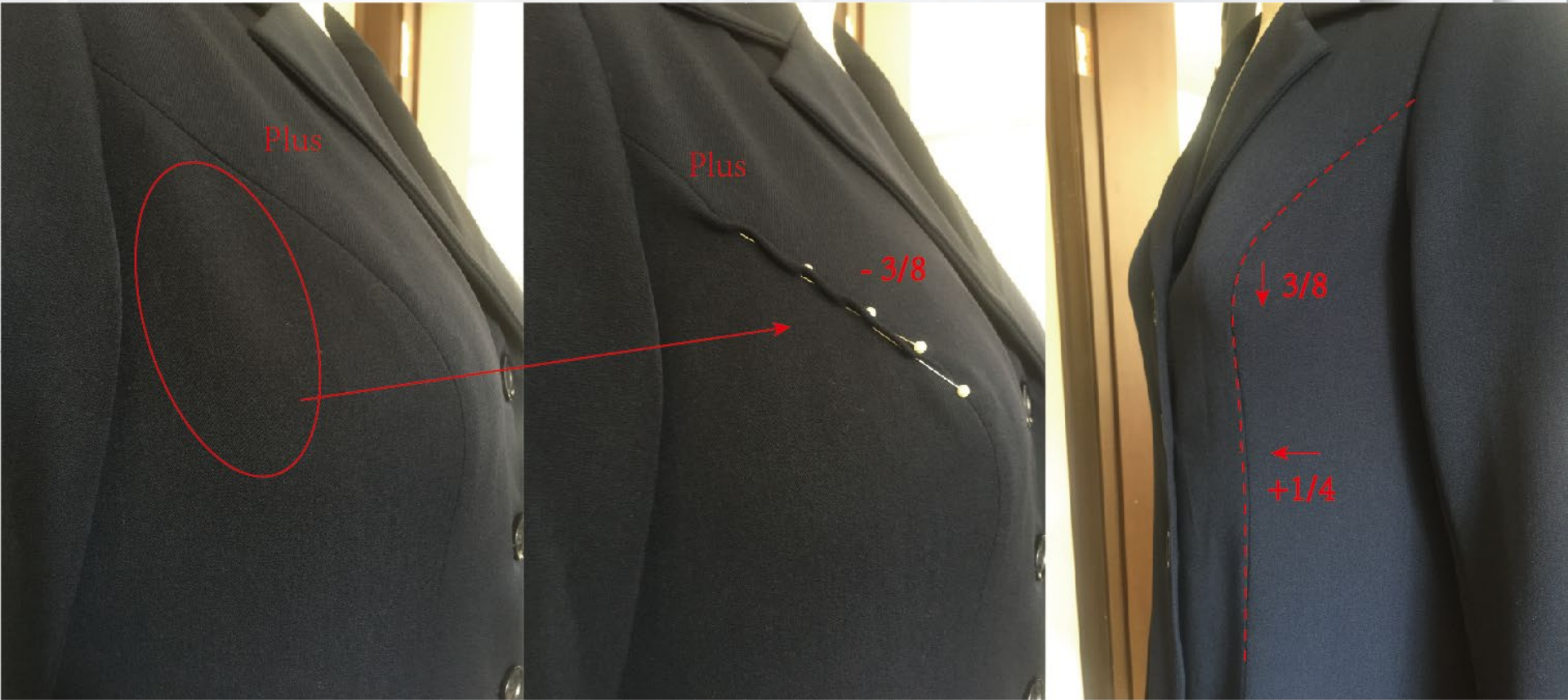


在胸部侧面和胸部以上的过度丰满,引起胸部起皱

Excess fabric preventing the garment from laying flat to the body and ugly shape.

Bust projection higher

胸量位置偏高



胸量位置偏高，小侧起空有余量

Bust projection is higher and slightly excess fabric at side panel

Good vs Poor Armholes

Good



Example of good projection
and bust placement.

袖笼圆顺平服

Poor

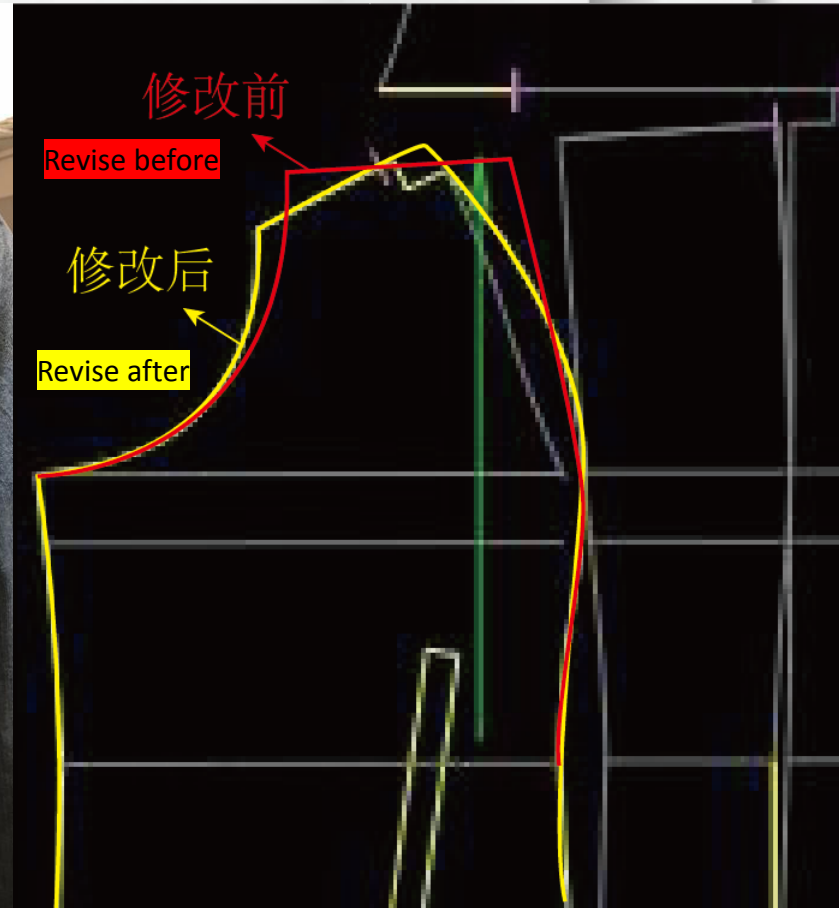


Often on plus sizes armholes are cutting in at the
back armhole and gaping open in the front.

前后袖笼不圆顺，前袖笼起空弧势太大，后袖笼弧
势偏直

Bust projection smaller

胸量偏小，袖笼起空



修改前为红色线条，黄色为修改后线条

Bust projection is not bigger enough, causing the gaping open at front armhole

Good vs Poor Side Seam Placement

Good



Poor



Example of good side seam
正确侧缝位置

由于胸量不够及前后片差不够引起摆缝偏前，请确保前片胸围必须大于后片 $3\frac{1}{2}$ 左右。 Often the front side seam is too far forward on plus samples.

Sleeve opening seam not level

袖口不水平



为避免袖口不水平,我们接受袖底缝有角

In order to keeping the sleeve opening seam to be level, we can accept there has angle at end of inside seam

The key of Plus pattern(TOP)

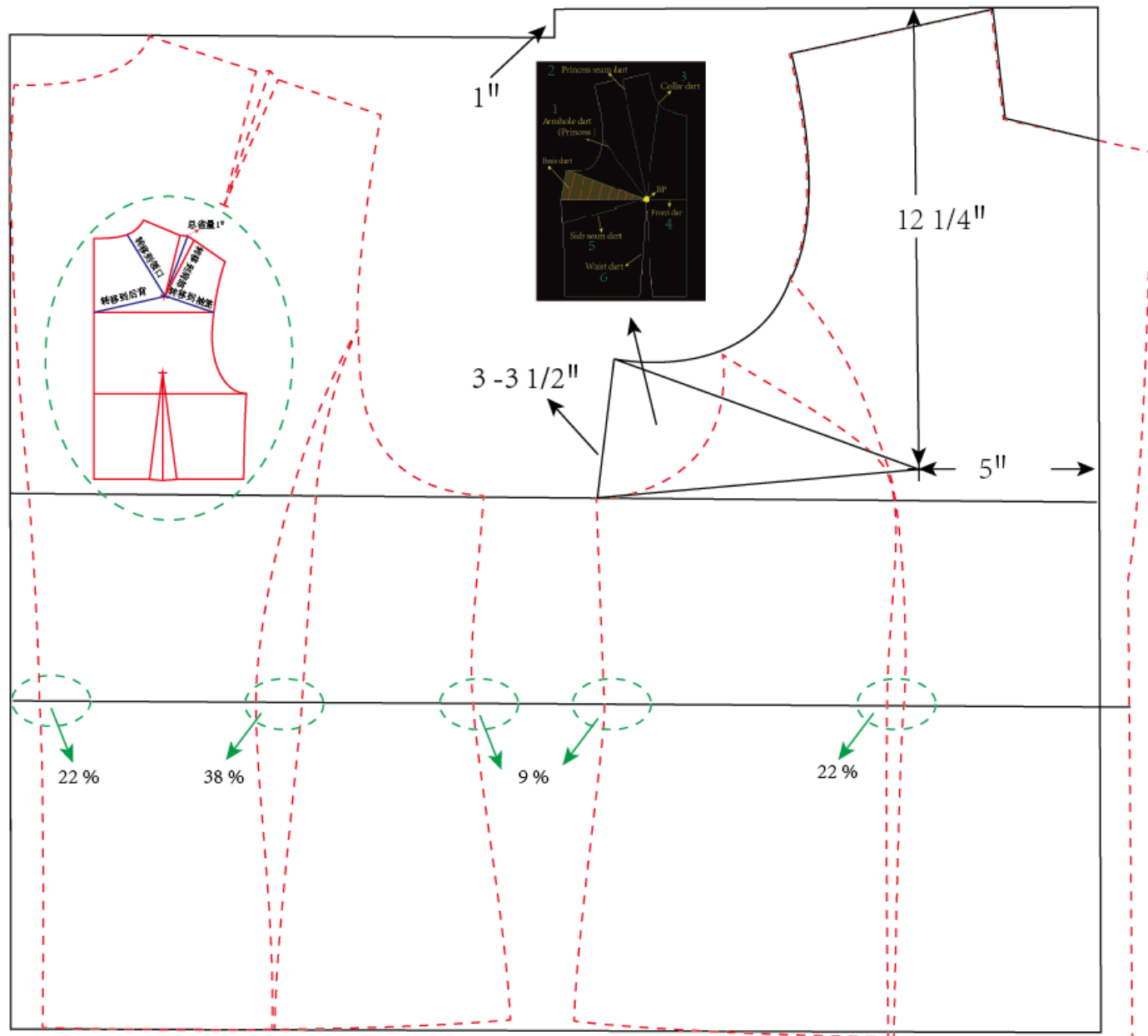
Plus上衣注意要点

Plus码上衣基本样请留意以下问题: Pay attention the key of Plus pattern as below:

- 影响上衣平衡度的最主要原因是的胸省量的大小及胸省的位置
- The most important key is the bust projection
- 胸高点距肩高点12 1/4，距前中为 5”
- BP From HPS 12 1/4” and From CF by 5”
- 前胸省的大小一般在3 ~3 1/2左右，具体需根据面料与款式确定
- Usually the bust dart deep on block is 3 ~ 3 1/2
- 前领宽要比后领宽偏小1/2至1”左右，前领深越深，相应的前领宽比后领宽的尺寸也就越小
- Front neck width should smaller than Back neck width by 1/2 ~ 1” base on styling
- 由于我们模特的特殊性 一般前肩斜比后肩斜要偏平1/4左右
- The front shoulder slope should be higher than back shoulder slope by 1/4
- 前上身长要比后上身长偏长1”（前后腰围位置在同一个水平线上，前肩高点比后肩高点偏高1）
- Front waist placement from HPS should be longer than back waist placement from HPS by 1”
- 前、后胸围尺寸 分配比例：前胸围比后胸围偏大3 1/2左右
- Front panel should be bigger than back panel by 3 1/2 ” at bust line
- 前、后腰围和下摆尺寸分配比例：请根据款式自行调整，确保前、后幅侧缝的形状要保持一致
- Front and back waist / hem panel adjust according to the front and back bust panel
- 一般情况前袖笼比后袖笼弯量的尺寸偏小1/4左右（不可超过1/2.），前袖笼也不可比后袖笼大
- Front armhole should be smaller than back armhole by 1/4” (the biggest is 1/2)
- 前、后 侧缝在腰围处收腰一般为1/2左右。如前后幅有腰省的款式，尽量在前、后腰省处收腰
- Usually, take volume at waist side seam by ”, take more volume at back panel than front panel if there has waist dart.

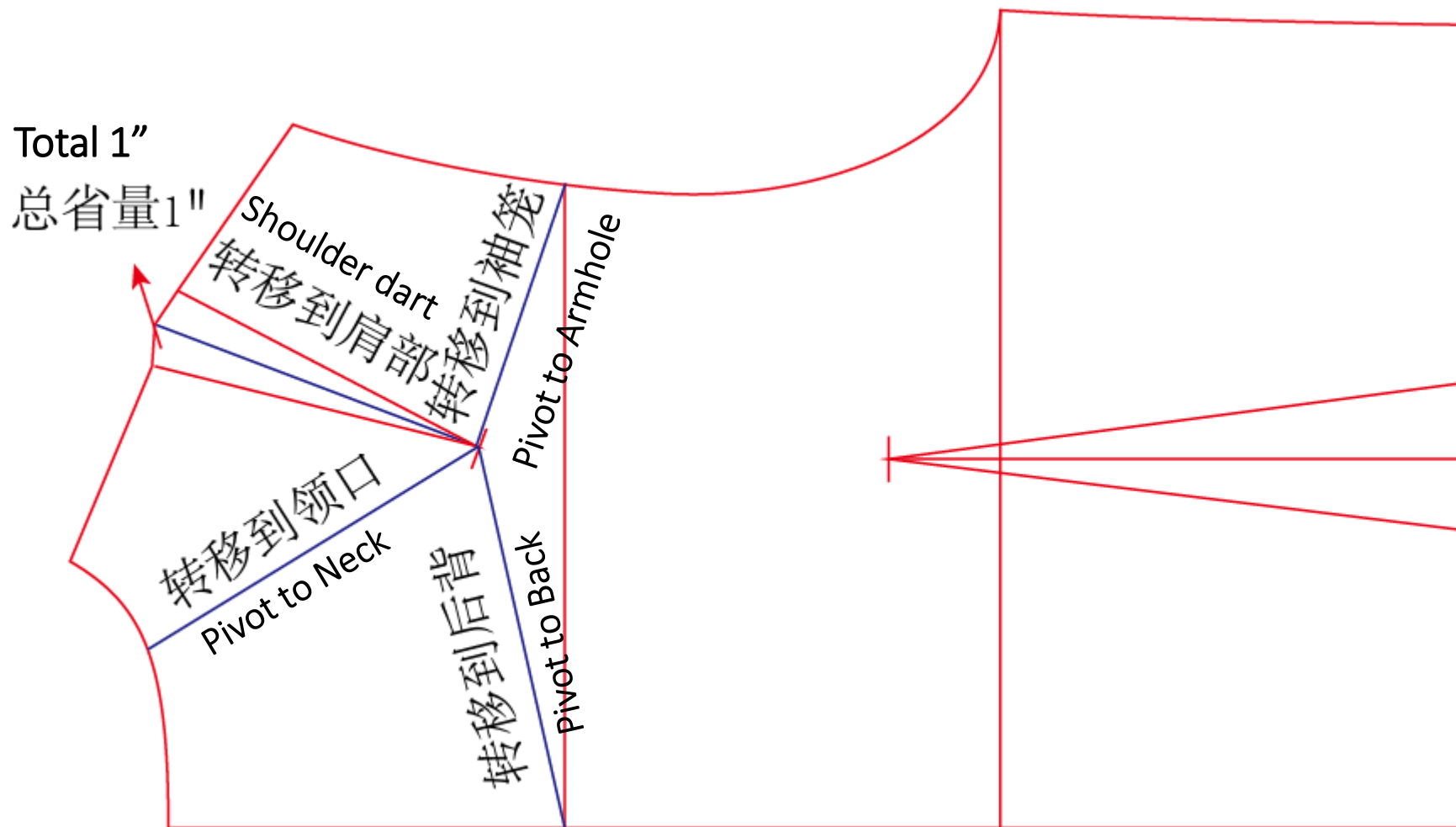
PLUS Top Block (Have bust dart)

PLUS 码上衣基本原型 (有胸省款)



PLUS- Four way pivot back shoulder dart

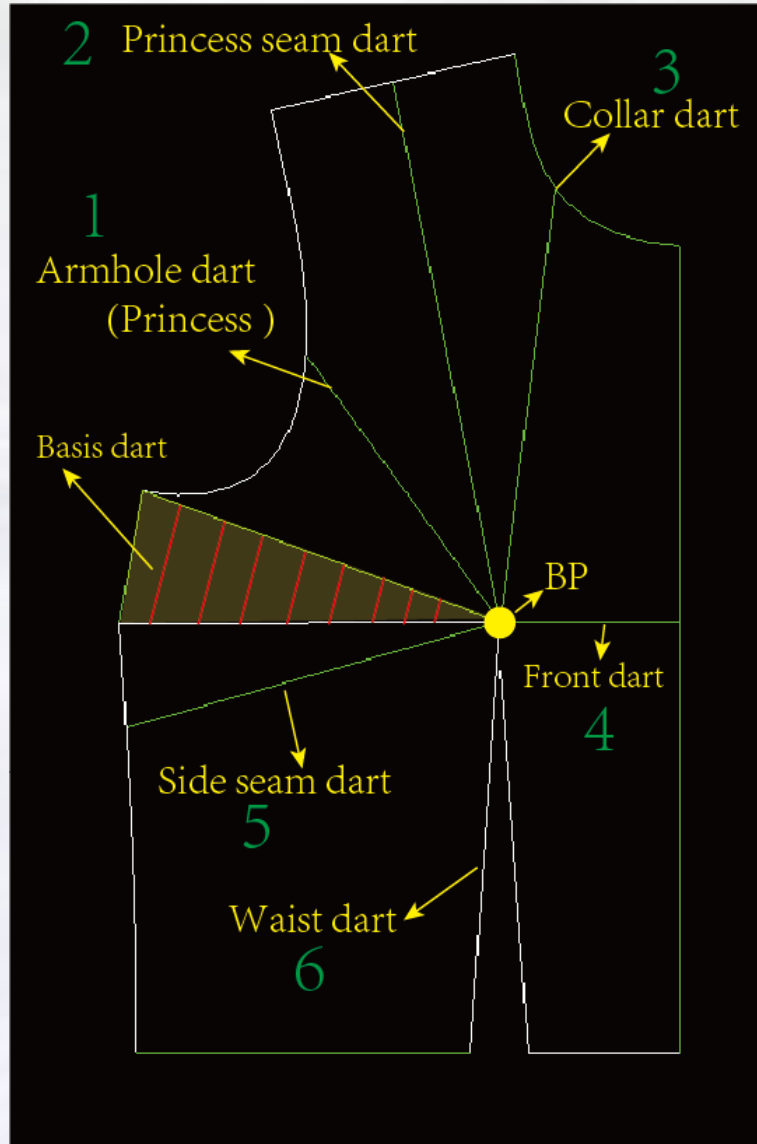
PLUS 码上衣基本原型后肩省转移方法



由于Plus后背厚度偏后，肩部有1" 的省量，我们可以通过蓝色线条转移消化
Because of the plus body back is more curved, there are have 1" dart at shoulder we can pivot back shoulder dart by four way as the blue line

PLUS- Six way to pivot Bust dart

PLUS 码上衣基本原型胸省转移方法



胸省六种转移方法:

Six way to pivot bust dart :

- | | |
|----------|-------------------|
| 1.转移到公主缝 | Pivot to princess |
| 2.转移到肩省 | Pivot to shoulder |
| 3.转移到领口 | Pivot to neck |
| 4.转移到前中 | Pivot to CF |
| 5.转移到腋下 | Pivot to under |
| armhole | |
| 6.转移到腰省 | Pivot to waist |

Poor Crotch shape



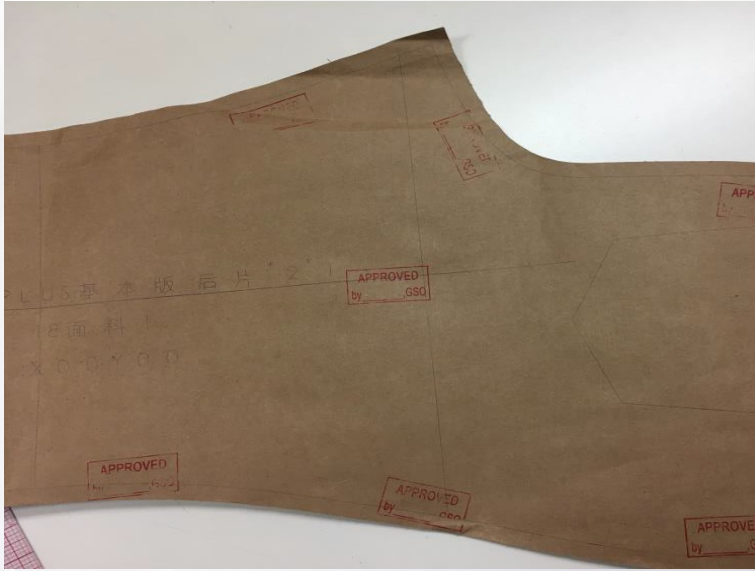
后浪起扭
Draglines



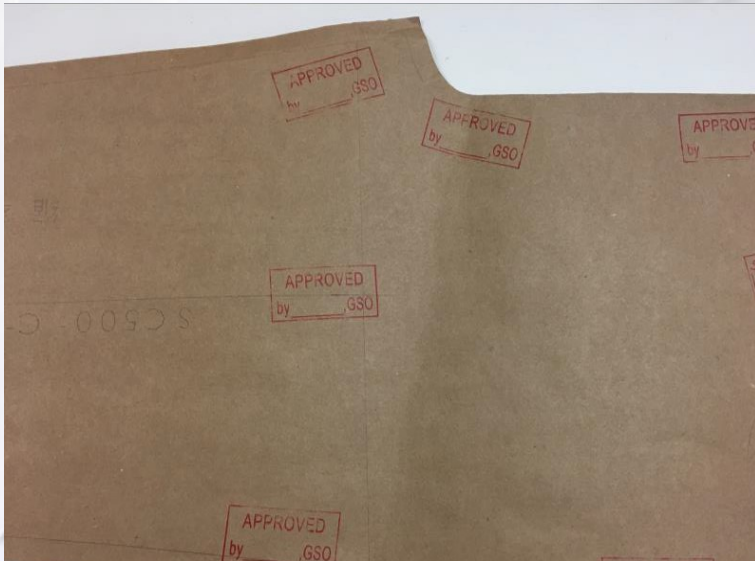
浪型太窄引起后浪起扭

Draglines at back under crotch due to the narrow crotch width

Good crotch shape



Example of good crotch shape



Poor Crotch Shape



The crotch width is too narrow causing the back rise to cut in too close to the model. This creates draglines

裤子浪型偏窄，引起裤子前后腿围处起猫须。



The crotch is not scooped out enough, causing excess fullness in front and back.

裤子浪型U型不正确，浪宽太窄引起裤子前后腿围处起猫须。



Good Crotch Shape

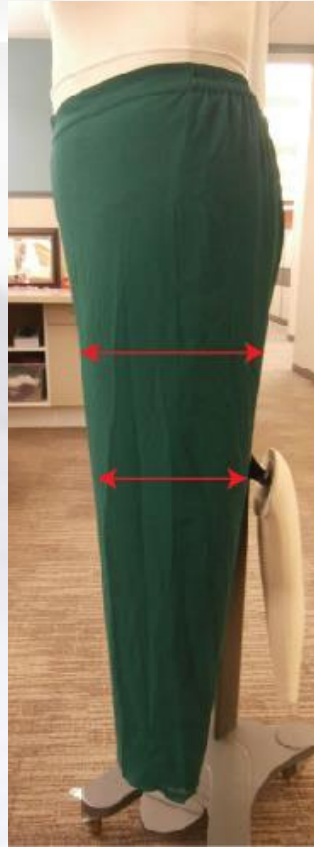


Good vs Poor Leg Shape

Good



Poor



Good



Poor



Grading needs to be adjusted to prevent the leg shape from getting too wide.

需要注意腿围档差的调整，
避免腿围形状变得肥大

The leg is too full through the knee and thigh.

膝围和大腿围过于肥大

The key of Plus pattern (Pants)

Plus裤子注意要点

Pay attention the key of Plus pattern as below: Plus码裤基本样请留意以下问题:

- **Front waist width should be wider than back waist width by 2 1/2 (except jean)**
➤ 前、后腰围尺寸分配比例: 前腰围要比后腰围偏大2 1/2"左右 (牛仔裤除外)
- **Front leg width should be narrower than back leg width by 1 1/2 and Front knee width should be narrower than back leg width by about 2"**
➤ 前、后坐围尺寸分配比例: 请根据款式自行调整。前脚围一般比后脚围偏小1 1/2左右, 前膝围一般比后膝围偏小2"左右
- **Take volume by 1/4 at the top of front rise and lower by 3/4 at the top of front rise**
➤ 前浪在腰处劈门一般为1/4左右 (从坐围处画一条垂线), 腰位在前中处下降3/4左右
- **Front crotch width about 2~2 1/2", back inseam should be shorter than front inseam by about 3/4~1" at top of crotch to the knee, bigger or smaller based on the fabric extension**
➤ 前浪的度一般在2~2 1/2"左右, 后片落档一般在3/4~1" 具体请根据面料弹性调节
- **It need the same wide both side from CF at thigh on front panel**
➤ 前裤筒分中线一定要居中 (在腿围处)
- **Take volume by 1" at the top of back rise and rise by 1 3/4 at the top of back rise**
➤ 后浪在腰处劈门一般为1"左右 (从坐围处画一个垂线), 腰位在后中处起翘一般在1 3/4左右
- **The inside part should be bigger than out side panel by about 3/8 ~ 1/2 from CB at thigh**
➤ 后裤筒分中线分中后 (在腿围处), 后幅比后侧要偏大3/8~1/2
- **The side seam should be forward by 3/4" (only on jean)**
➤ 牛仔裤铺平后, 侧缝要有走前3/4的现象

Pants block (front)

我司人体的体型不同于别的公司，所以版型的差异非常大，见下面的图片(前片)，前片挺缝线对折后，务必要保持横档、膝围、脚口左右相等，因为我们人体是圆形的。

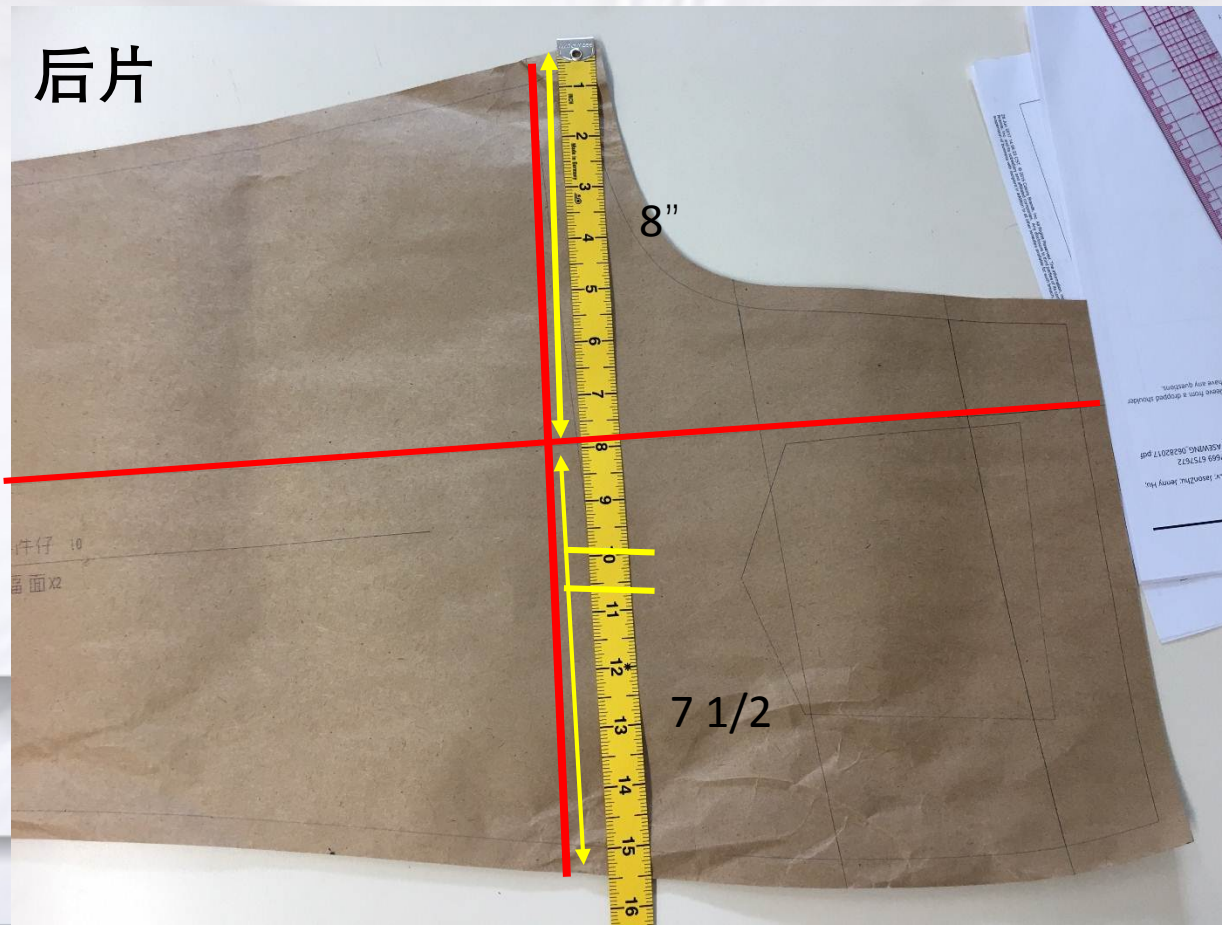
- It need the same wide both side from CF at thigh on front panel



Pants block (back)

我司人体的体型不同于别的公司，所以版型的差异非常大，见下面的图片（后片），后中线对折后，务必要保持膝围、脚口左右相等，横档处因为考虑到臀腰差和浪宽问题，可以允许后片比侧缝大 $3/8 \sim 1/2$ ，不要超过 $1/2$ ，具体根据尺寸和款式的风格自行调整。

- The inside part should be bigger than out side panel by about $3/8 \sim 1/2$ from CB at thigh



Plus crotch width shape

Plus

$7\frac{3}{4}'' \sim 8\frac{3}{4}''$

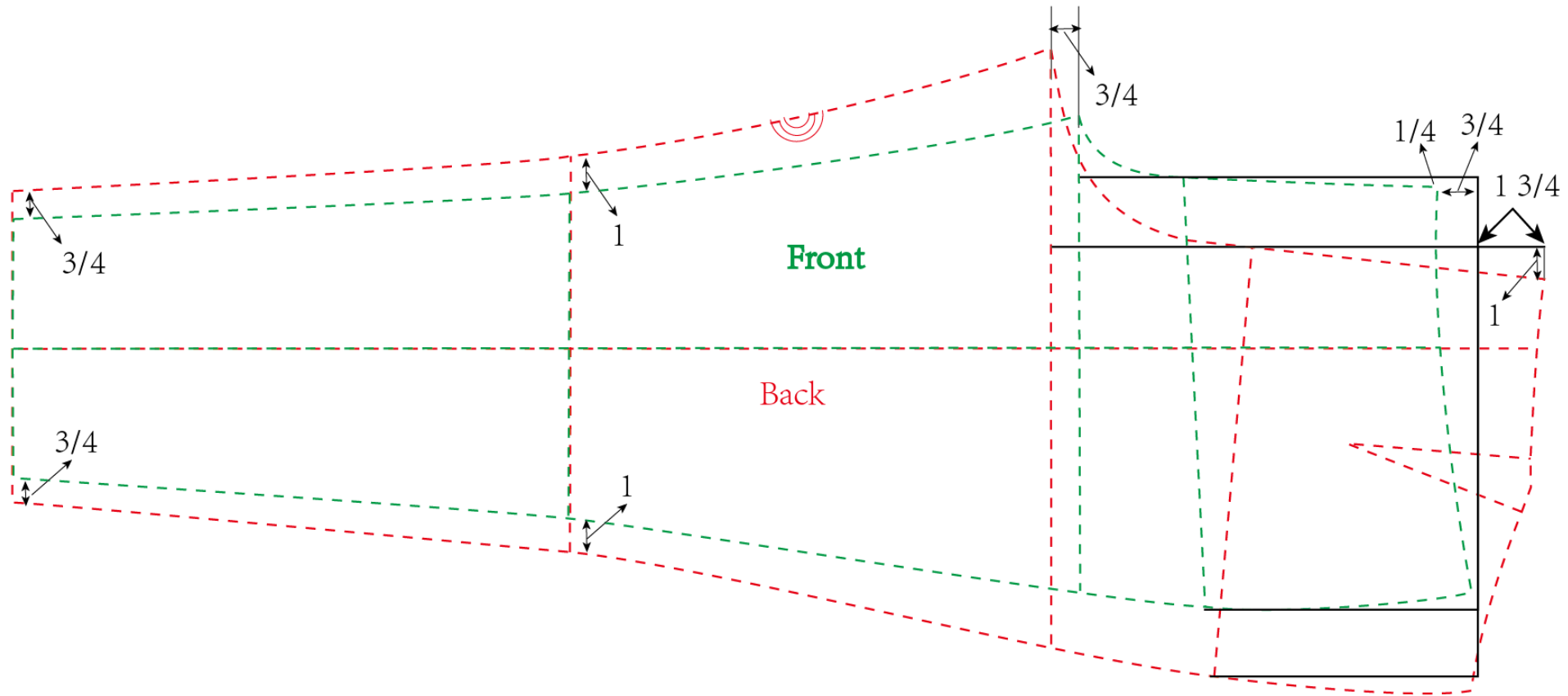
2''

Plus码基本版型浪宽在 $7\frac{3}{4}'' \sim 8\frac{3}{4}''$ 左右，实际操作中，需根据面料的弹性去调整浪型的宽度，面料弹性越好，浪的宽度越窄，面料弹力越小，浪的宽度越宽。

Usually we do the plus crotch width by $7\frac{3}{4}'' \sim 8\frac{3}{4}''$ at 2'' from the bottom when combine the pants inside seam.

Measurement use rule: fabric extension better the measurement will smaller, in contrast fabric extension less the measurement will larger,

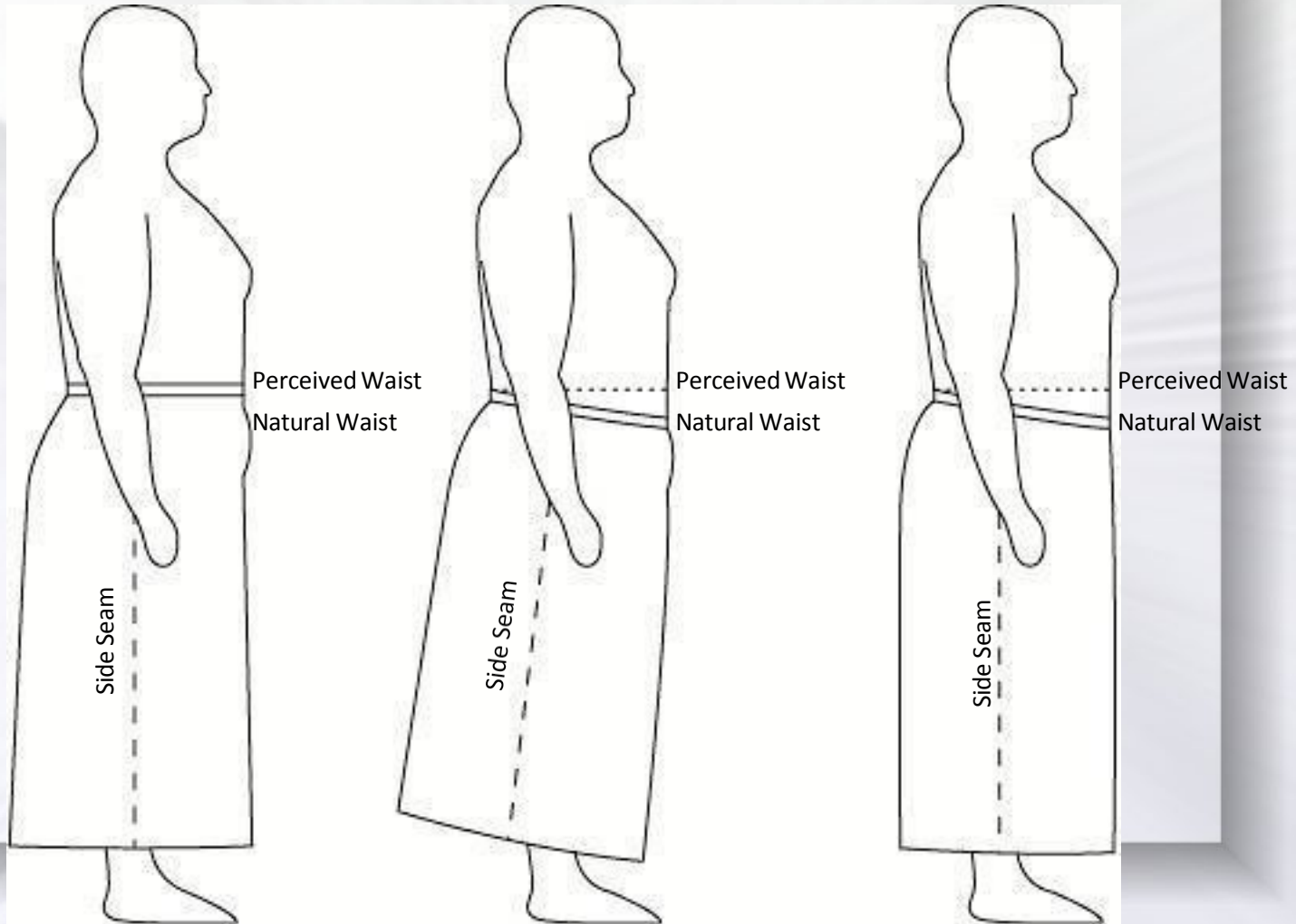
Plus pants block



- **Front panel : Green line**
- **Back panel: Red line**

Waist Placement/ Skirt Pitch

* Plus 腰围弧度要大于Missy的腰围弧度见下图



裙身平衡
但腰位太高.

腰位正确
但裙身不平衡.

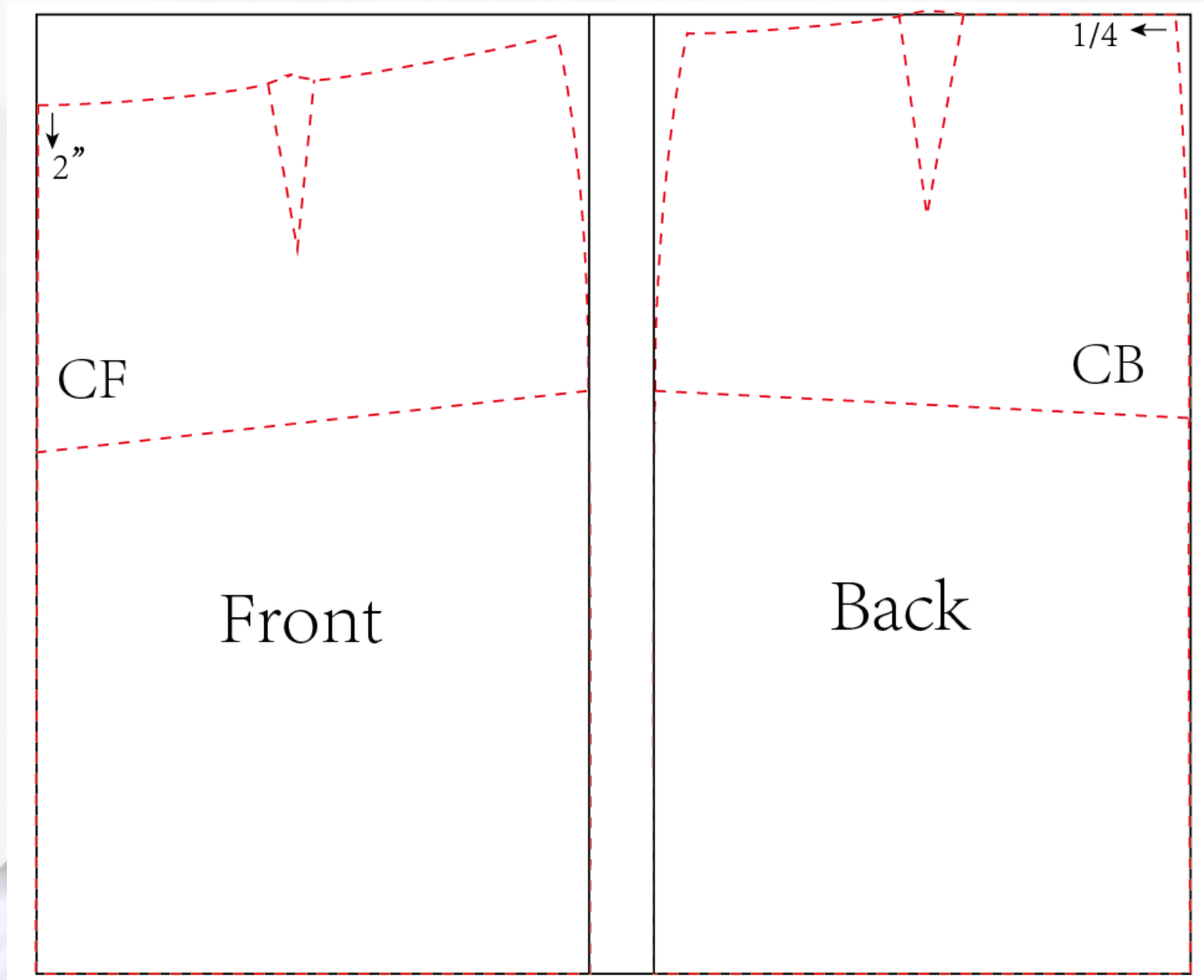
腰位正确
裙身平衡.

The key of Skirt pattern

Plus 码裙基本样注意以下几点： Pay attention the key of Plus pattern as below:

- 如有后中缝，一般后中缝在腰缝处要劈掉1/4左右
- **Take volume by 1/4 " at the top of CB, if the skirt has CB seam**
- 前、后 腰围尺寸分配比例：前腰围要比后腰围偏大2 1/2" 左右。
- **Front waist width should be wider than back waist width by 2 1/2**
- 前、后坐围和下摆尺寸分配比例：请根据款式自行调整，确保前、后幅侧缝的形状保持一致。
- **The garment side seam should be sitting the same as the dummy side seam**
- 因我们**Plus**码一般前裙长比后裙长偏短2"，所以我们将腰位在前中下降2"，至后中为 0。同时确保腰位要圆顺，在后中处不可以呈三角形。
- **The CF length should be shorter than the CB length by 2", make smoothly seam around waist**
- 前、后 侧缝在腰围处一般各劈掉3/4左右，不可超过1"，否则样衣穿模特后，侧缝在坐围处会向外突出。
- **Take volume by about 3/4 " at both the top of side seam, the largest is 1" to avoid ear at hip**
- 前腰省的大小不可超过1",后腰省的大小不可超过1 1/2.。一般前后腰省的长度在4 1/4
- **The back dart should be bigger than front, about 1" at front 1 1/2" at back, dart length about 4 1/4 "**

PLUS Skirt Block



Styling

PLUS款式主要要点

Print and Trim Limitations (印花与辅料限制)

- **It is important to advise on trim size limitations.**
 - 辅料/印花尺寸的限制
- **Is the trim one size missy/one size plus?**
 - 不同尺码辅料/印花的尺寸要求及Missy和Plus的尺寸要求
- **It is important to advise on print limitations early in the fit process.**
 - 在样品过程考虑到辅料/印花是非常重要的
- **Grading can be adjusted to accommodate for print limitations.**
 - 根据实际样品调整辅料/印花位置
- **We may need to add seaming to accommodate for the plus sizes.**
 - 必要时需要对Plus款式结构进行调整

Style Lines (款式线)

- **Style lines divide the space within a garment.**
 - 通过在样品中添加分割线来满足Plus形体要求
- **Gives emphasis to a certain point.**
 - 对重点部位给予突出强调

Proportion (比例)

- **Size or scale of the garment or various components of a garment.**
 - 通过调整样品部件的尺寸和比例来满足样品需求
- **Extra buttons and belt loops**
 - 通过增加样品的纽扣满足样品的比例需求

Tolerance (公差)

- 提出合理公差建议基于Plus款的特殊尺寸
- **Make reasonable tolerance suggestion based on Plus' big measurement**
 - 根据面料门幅宽度重新调整推档尺寸
- **Make special measurements / grading based on limited of fabric wide**